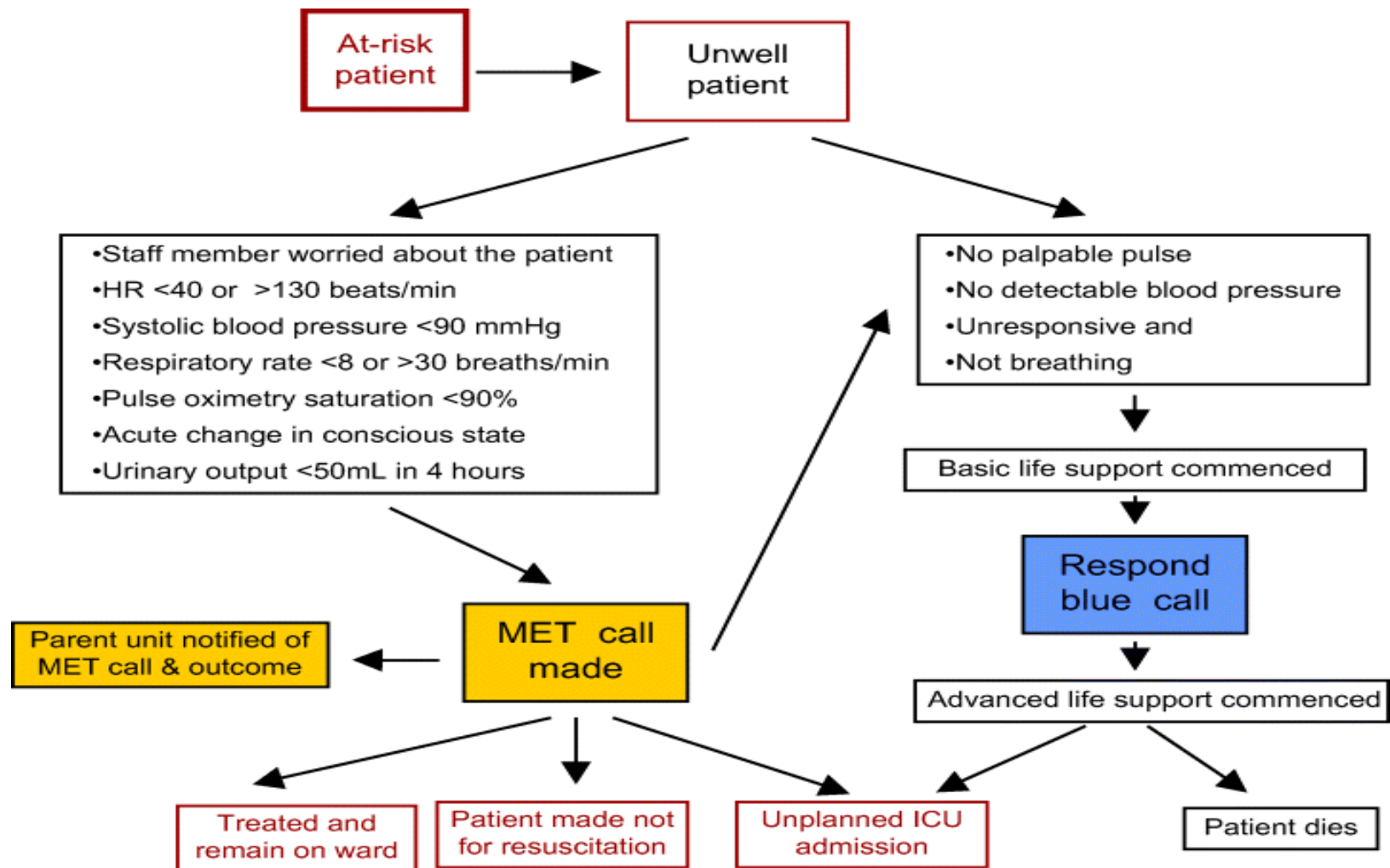


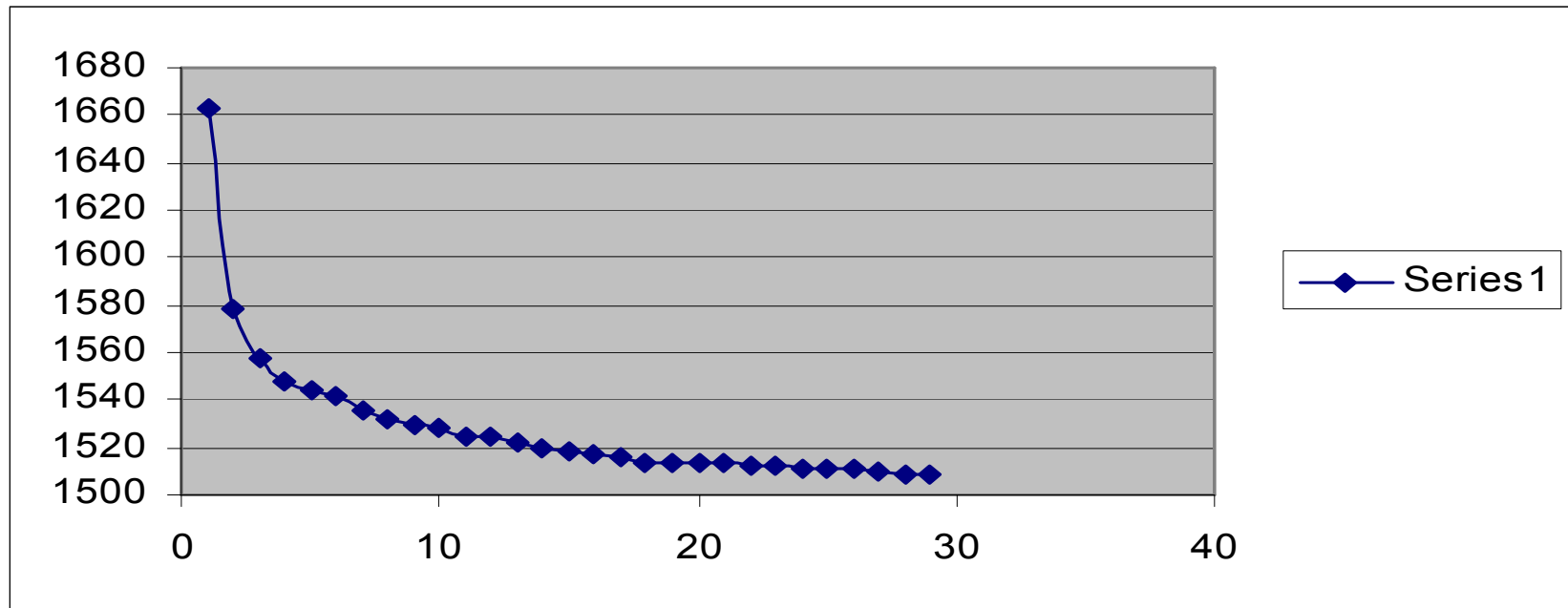
# **Reduction of unexpected events in a Medical Ward after Implementation of Early Warning Score**

**J. do Campo, M. Anderson, R. Hayes,  
C. Shennan, A MacDonald.**

**Department of Medicine Launceston  
General Hospital.**



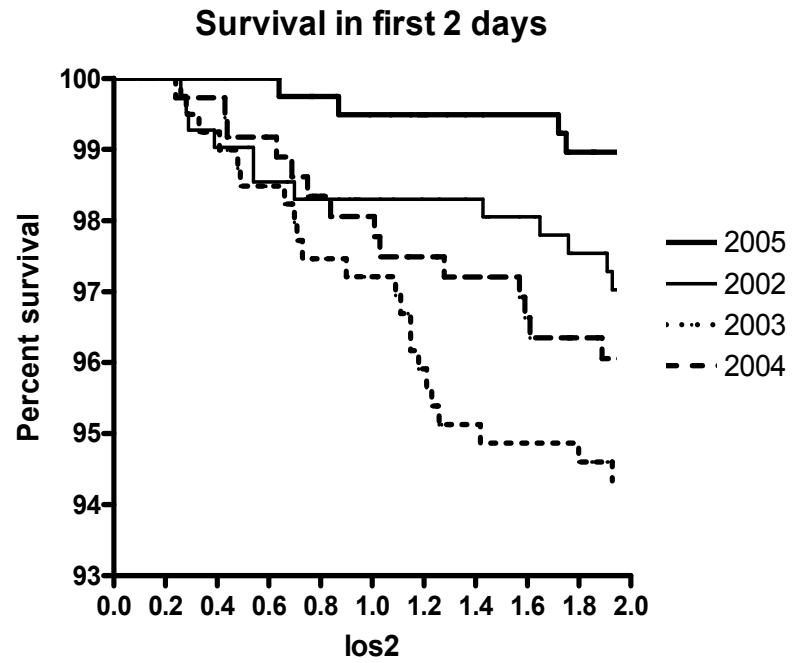
# ICU Mortality 2001-04



## 2001-04 ICU Mortality & First 24-48 hours

	2001	2002	2003	2004	2005
• Total ICU	443	410	348	389	333
• Total Death	68	53	73	53	51
• First 24-48hs	32	24	36	22	<u>10</u>

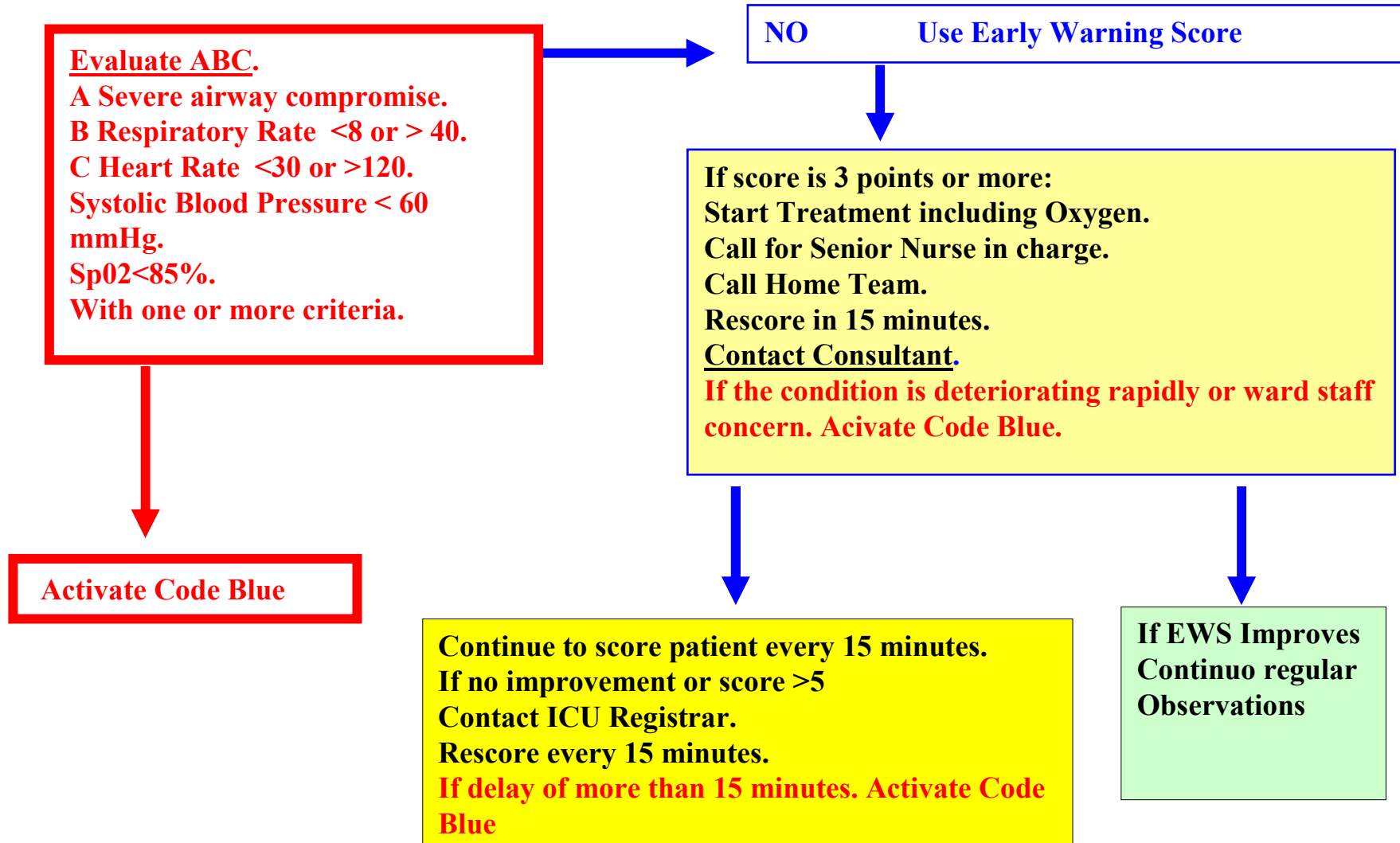
# ICU Survival



# Early Warning Score

<b>Score</b>	<b>3</b>	<b>2</b>	<b>1</b>	<b>0</b>	<b>1</b>	<b>2</b>	<b>3</b>
<b>HR per minute</b>		<40	41-50	51-100	101-110	111-129	>130
<b>BP Systolic</b>		<80	81-100	101-199		>200	
<b>Respiration per minute</b>	<8			9-14	15-20	21-29	>30
<b>Conscious State</b>	Un-responsive	Response Only to pain	Drowsy. Rousable to voice.	Alert			
<b>Temperature</b>		<35		35.1-37.5	>38.5		
<b>Urine Output</b>	Nil	<20 ml/2h	20-50 ml/2h	>50 ml/2h			

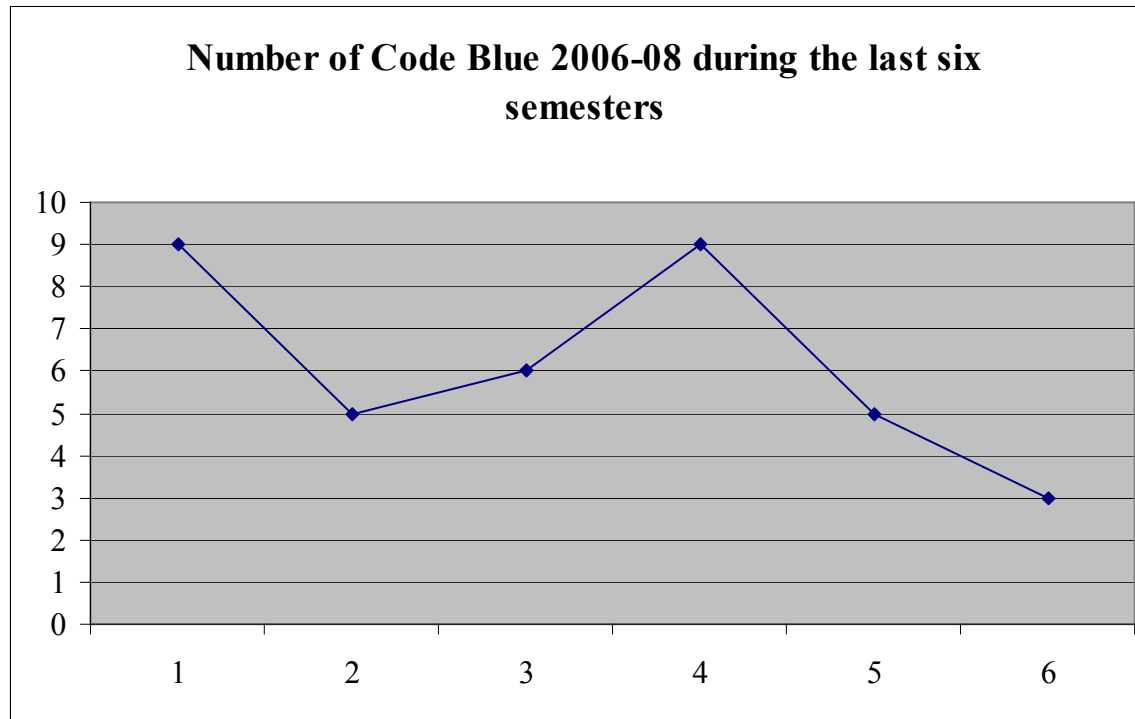
**If Patient Unwell or Condition Deteriorates.  
Nurse caring for the patient assess and diagnose the problem.**



# Code Blue Ward 4D 2007-08

Year	2007	2008 January to June	2008 July to December
Total CB Ward	15	5	3
Syncope =	5 All survived	-----	1 Survived
Asystole =	2 #	1 #	
Respiratory	4 All survived	1 Survived	
EMD (*)	1 Survived		1#
Unknown	2 Survived		
VF arrest	1#	1 Survived	1Survived
Haematemesis	----	1 Suvived	
CVA	-----	1 Survived	

# Code Blue Ward 4D 2007-08



# Early Warning Score

- **The EWS is a very useful tool to detect patients deteriorating their clinical condition and during the period it was implemented reduced the total number of Code Blue.**